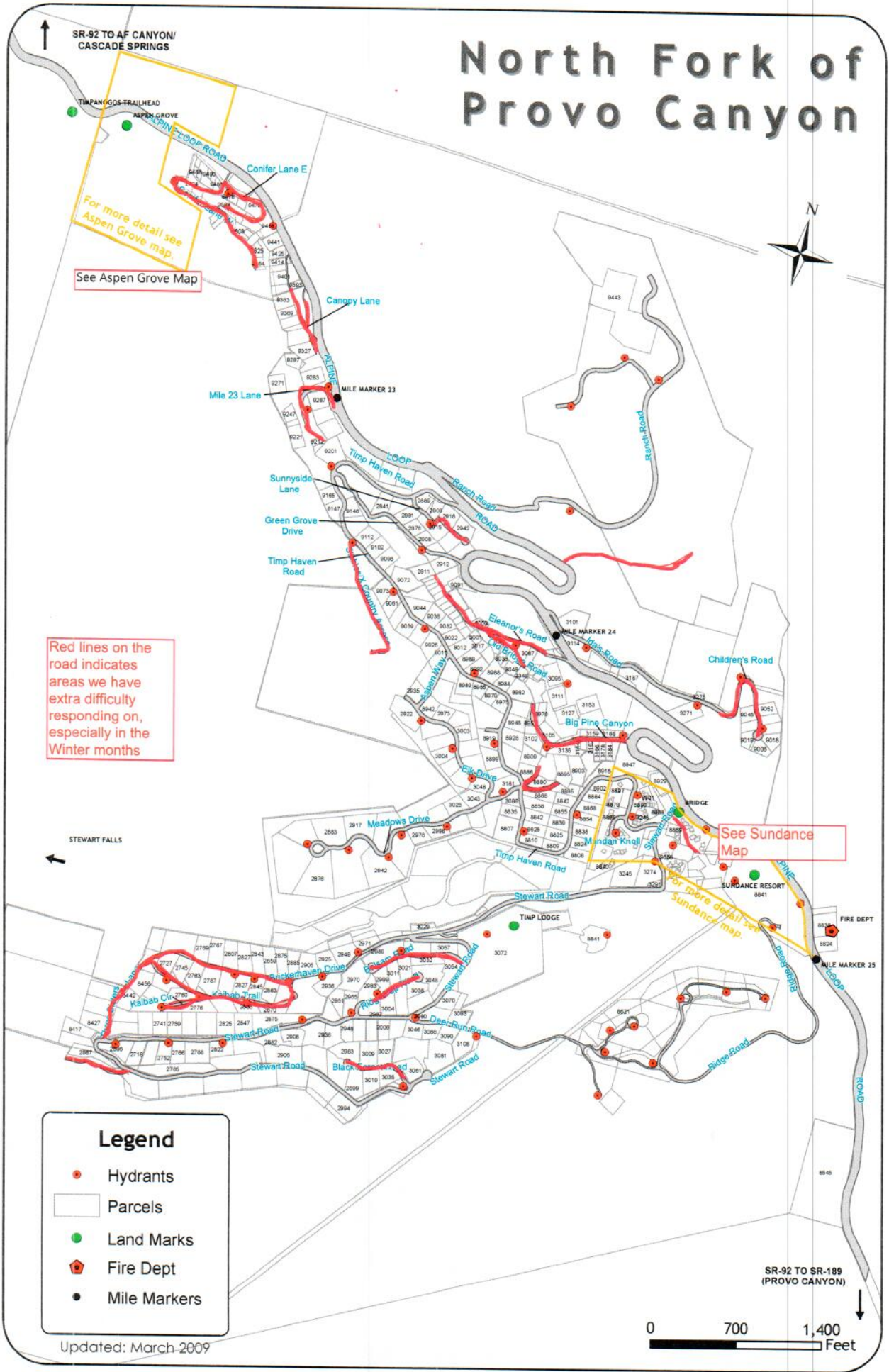


North Fork of Provo Canyon



For more detail see Aspen Grove map.
See Aspen Grove Map

Red lines on the road indicates areas we have extra difficulty responding in, especially in the Winter months

See Sundance Map
For more detail see Sundance map.

Legend

- Hydrants
- Parcels
- Land Marks
- 🚒 Fire Dept
- Mile Markers

Updated: March 2009

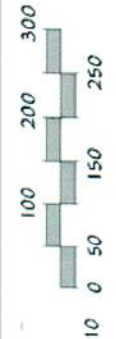
0 700 1,400 Feet

aspene



INDEX

H7	ALUMNI BOARD CABIN
D5	AMPHITHEATER
E6	ARTS & CRAFTS
I3	ARCHERY RANGE
E4	ASPEN LODGE
D5	BADMINTON COURTS
G3	BALL FIELD
C2	BASKETBALL COURT
C4	BECKHAM LODGE
E7	CANYON RIM RESTROOMS/SHOWER/LAUNDRY
B2	CARETAKER'S RESIDENCE
B6	ELK POINT RESTROOMS/SHOWER/LAUNDRY
D4	EMERALD LODGE
D4	EMERALD LODGE RESTROOMS
C5	FISH POND
G7	HARRIS CABIN #1
F7	HARRIS CABIN #2
D2	HI-BALL
D5	HORSESHOE PITS
D2	HUI SH ACTIVITY CENTER
E7	KITTEN KLLUB
B1	MAINTENANCE BUILDING
F5	OVERLOOK LODGE
C2	PIRATE SHIP PLAY AREA
C6	PUMP HOUSE
C2	RACKETBALL COURTS/GOLF
D2	ROMPER CENTER
D6	ROPES COURSE
C2	SHUFFLE BOARD
B2	SNOWSHOE LODGE
A1	STORAGE
E5	SUNRISE LODGE
E3	SWIMMING POOL & DRESSING ROOMS
I8	TALL PINES RESTROOMS/SHOWER/LAUNDRY
D1	TEEN AMPHITHEATER
D4	TELEPHONES
G1	TENNIS COURTS
F2	VOLLEYBALL COURT (SAND)

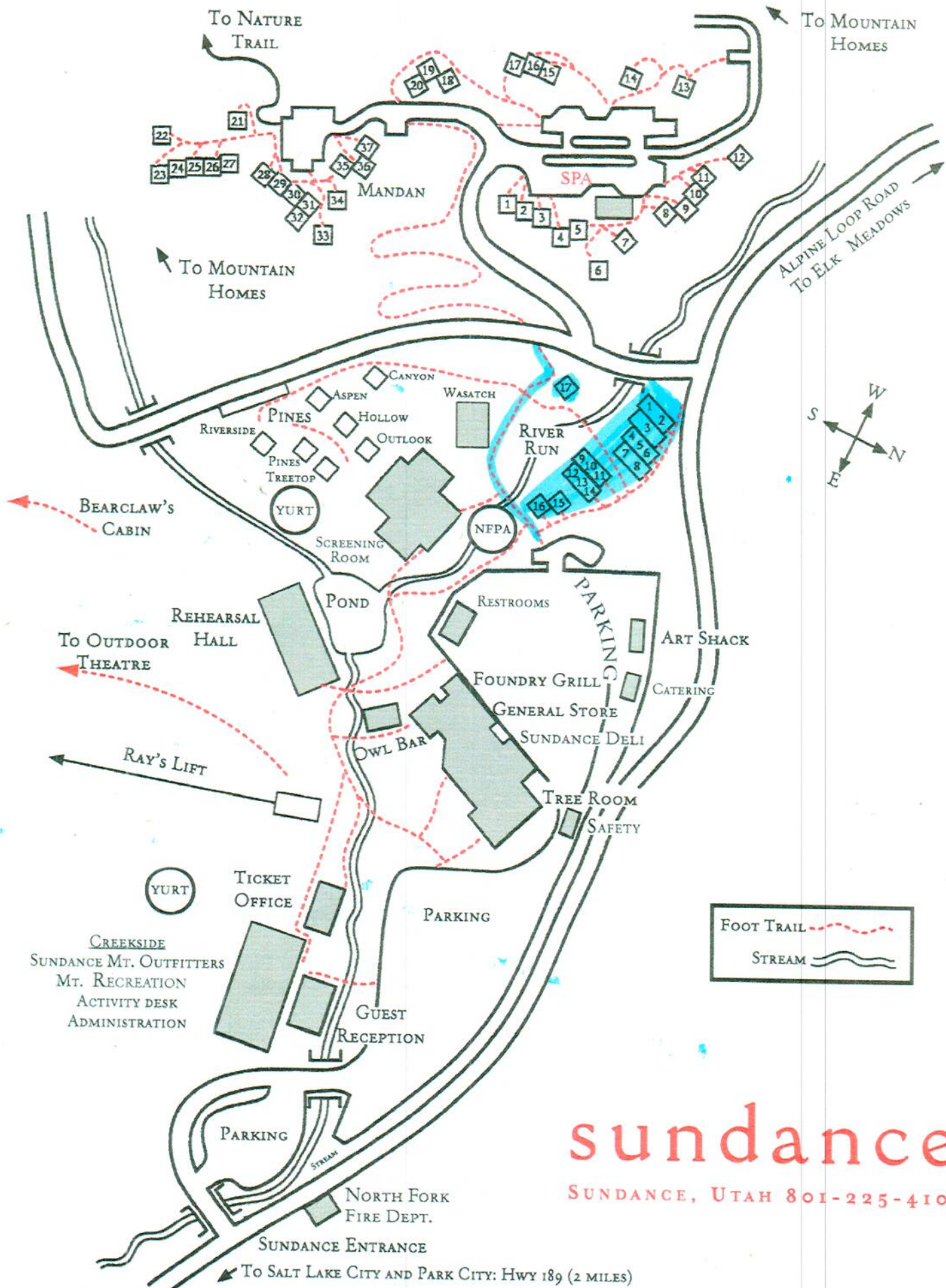


TO STEWART FALLS LOWER TRAIL

TO STEWART FALLS LOWER TRAIL

TO STEWART FALLS UPPER TRAIL

TO TIMP TRAIL HEAD



sundance

SUNDANCE, UTAH 801-225-4107

TO SALT LAKE CITY AND PARK CITY: HWY 189 (2 MILES)