

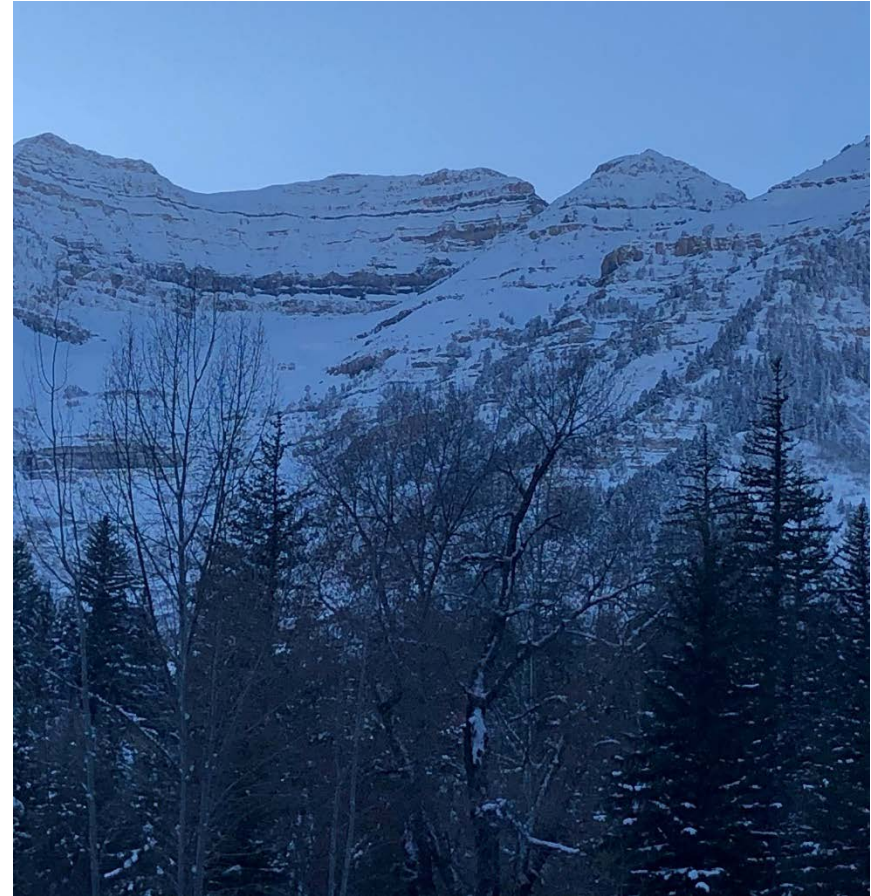


NFSSD and Sundance Resort Water Rights

Matthew E. Jensen
April 8, 2021

Discussion Topics

- ▶ Resort Owner's Goals
- ▶ NFSSD Water Rights
- ▶ Resort Water Right
- ▶ Hamblin Agreement
- ▶ Class A Water Deliveries
- ▶ Water Requirements vs. Water Usage
- ▶ Next Steps



Sundance Resort Goals

1. A Reliable and Efficient Water System
2. Equitable Allocation of Burden for Goal #1
3. Dedicate Resources to NFSSD to:
 - Meet Goal #1 and Goal #2
 - Cover impacts of Future Resort Development
4. Promote Conservation

Confirmed NFSSD Water Rights

WR #	Volume (AF)	Comments
55-12770	5.6	Class A Provo River rights approved through change application a41681 for 46.32 acre-feet of municipal use from NFSSD sources, including three proposed well sites.
55-12771	6.4	
55-12772	16.92	
55-12773	12	
55-12774	5.4	
E3881 (55-8526)	126	Water under the Hamblin Agreement totaling 126 acre-feet for domestic, resort, snow making, stockwatering, commercial, irrigation and fire protection uses.
Total	172.32	

Note: NFSSD filed claims in the General Adjudication for an additional 155 acre-feet under E2189 and 25 acre-feet under E892.

Resort Water Right

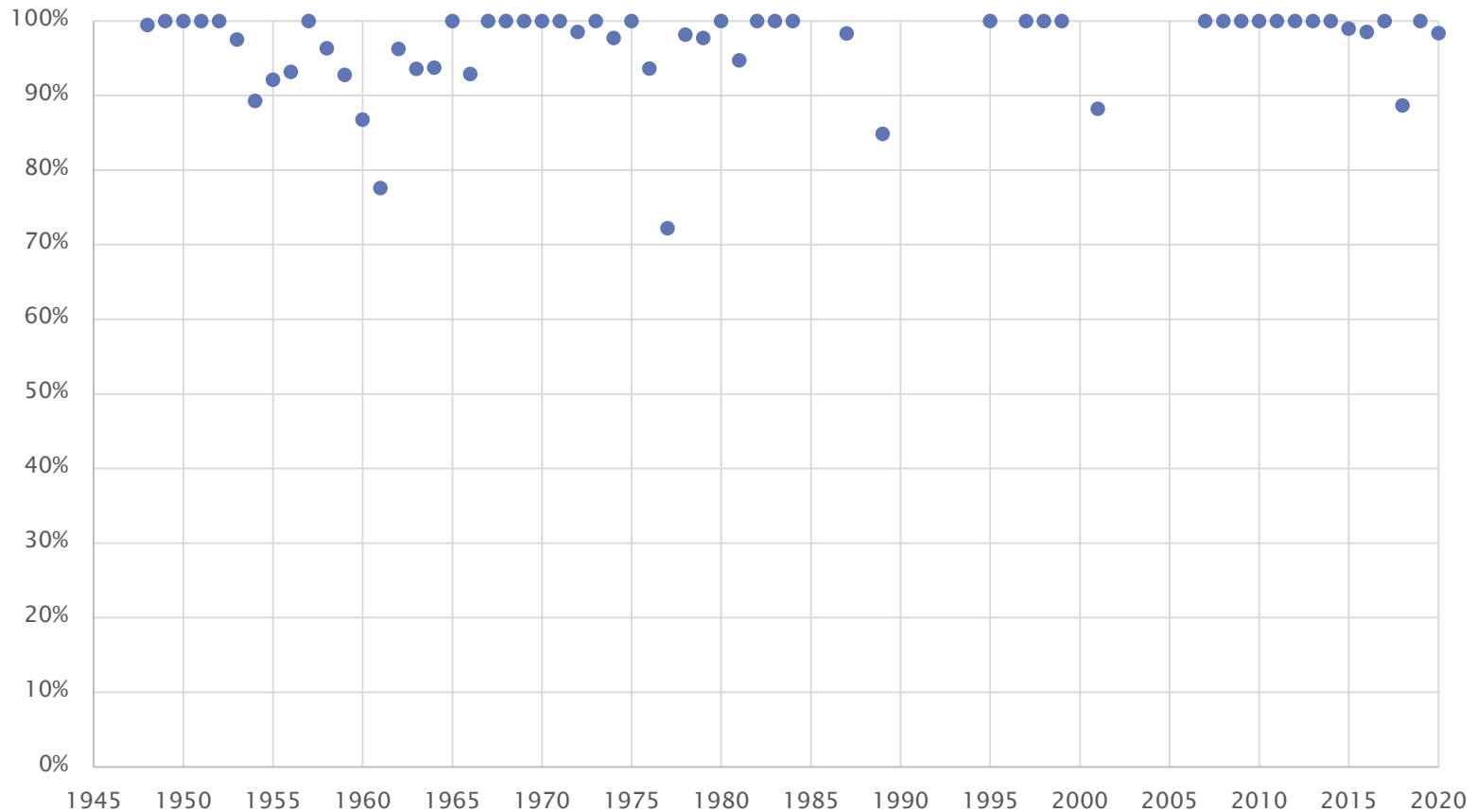
Certificated Exchange Application No. E5247

- 204 Acre–feet Based on Hamblin Agreement
- Irrigation of 35.75 acres (143 acre–feet)
- Commercial (including Snowmaking) of 56 acre–feet
- Seasonal Domestic Uses of 20 EDU (5 acre–feet)

1978 Hamblin-Provo Agreement

19 4. Contract Right of Hamblins. HAMBLINS are the owners of a
20 contract right in perpetuity to an amount of storage water from
21 Deer Creek Reservoir or at PROVO's option, from some other storage
22 source available to PROVO, above or near Deer Creek Reservoir,
23 equal in quantity, on an acre foot for acre foot basis, to such
24 water as PROVO is entitled to divert into the PROVO municipal
25 system in accordance with Certificate A-460 as it may be limited by
26 judicial decree. PROVO will be responsible for the delivery of
27 such storage water. PROVO's obligation to deliver storage water in
28 exchange for the Dixon Water is binding whether or not the Dixon
29 Water is actually diverted or used, however, if water is not avail-
30 able to Provo City out of the Dixon Right for exchange by reason of
31 an Act of God, then PROVO will not be obligated to deliver said
32 storage water.

Class "A" Provo River Water Supply

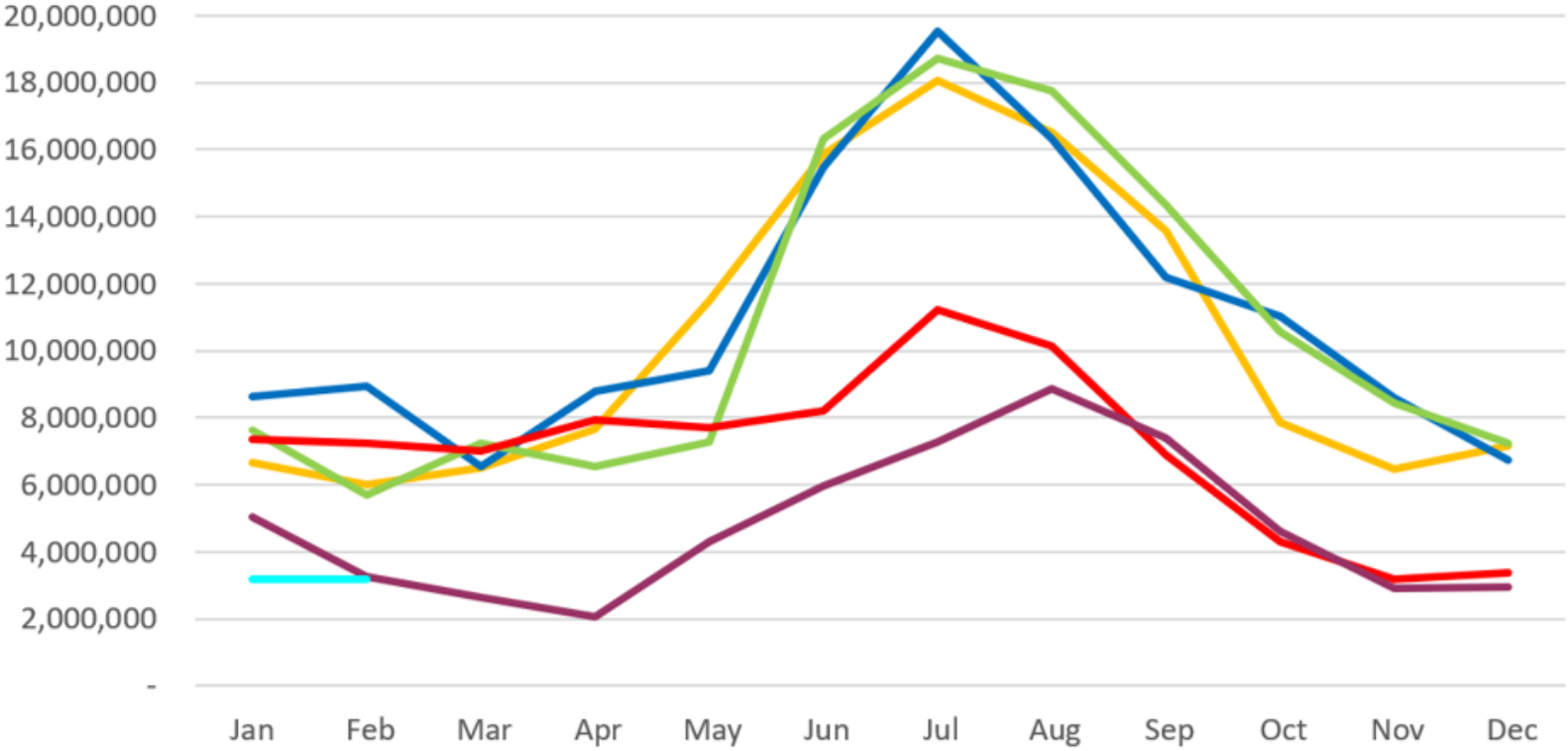


- ▶ Median Water Supply – 100%
- ▶ Mean Water Supply – 97%
- ▶ 10th Percentile Water Supply – 89%

State Water Requirement Standards

- ▶ 146,000 gal./ERC (400 gpd) or 0.45 acre-feet/ERC for indoor uses (See UAC R309-510-7)
- ▶ 4 acre-feet/acre of irrigation (based on flood irrigation of alfalfa)
- ▶ 1.66 acre-feet/acre of irrigation (based on UAC R309-510-7)
- ▶ Standards may be reduced based on actual use data (See UAC R309-510-5)

NFSSD Monthly Water Usage



2021 – Turquoise 2020 – Purple
 2019 – Red 2018 – Yellow
 2017 – Blue 2016 – Green

2019 NFSSD Water Use

User	Usage (gallons)	Usage (acre-feet)
Residential	29,018,870	89.06
Aspen Grove	3,529,102	10.83
Timp Lodge	1,476,820	4.53
Sundance Resort	22,571,448	69.27
NFSSD	1,283,200	3.94
Total	57,879,439	177.63
Total (NFSSD WRs)	35,307,992	108.36

NFSSD Water Use per ERC

- ▶ In 2019, average use / residential connection was 0.28 acre-feet.
- ▶ Since 2014, average use / residential connection was 0.51 acre-feet/year, which includes indoor, outdoor, and any leakage water associated with those connections.
- ▶ The draft master plan uses 0.2 gpm/ERC, which equates to 0.32 acre-feet/ERC.

Typical Water Use per ERC (statewide statistics)

- ▶ Statewide indoor use of water is 60 gpcd (gallons per capita per day). UDWRRes Report.
- ▶ For reference, 3 fulltime residents per ERC, would equate to 180 gpd or 0.2 acre-foot/year/ERC for indoor uses.

Next Steps

Negotiate and finalize a comprehensive Water Service and Development Agreement with NFSSD, including the following:

- ▶ Clear procedures and timing for issuing NFSSD will serve letters in connection with the county development process.
- ▶ Secure source, storage, and/or transmission infrastructure sized for peak use.
- ▶ Provide water rights consistent with the projected impact from the development.

Discussion and Questions